



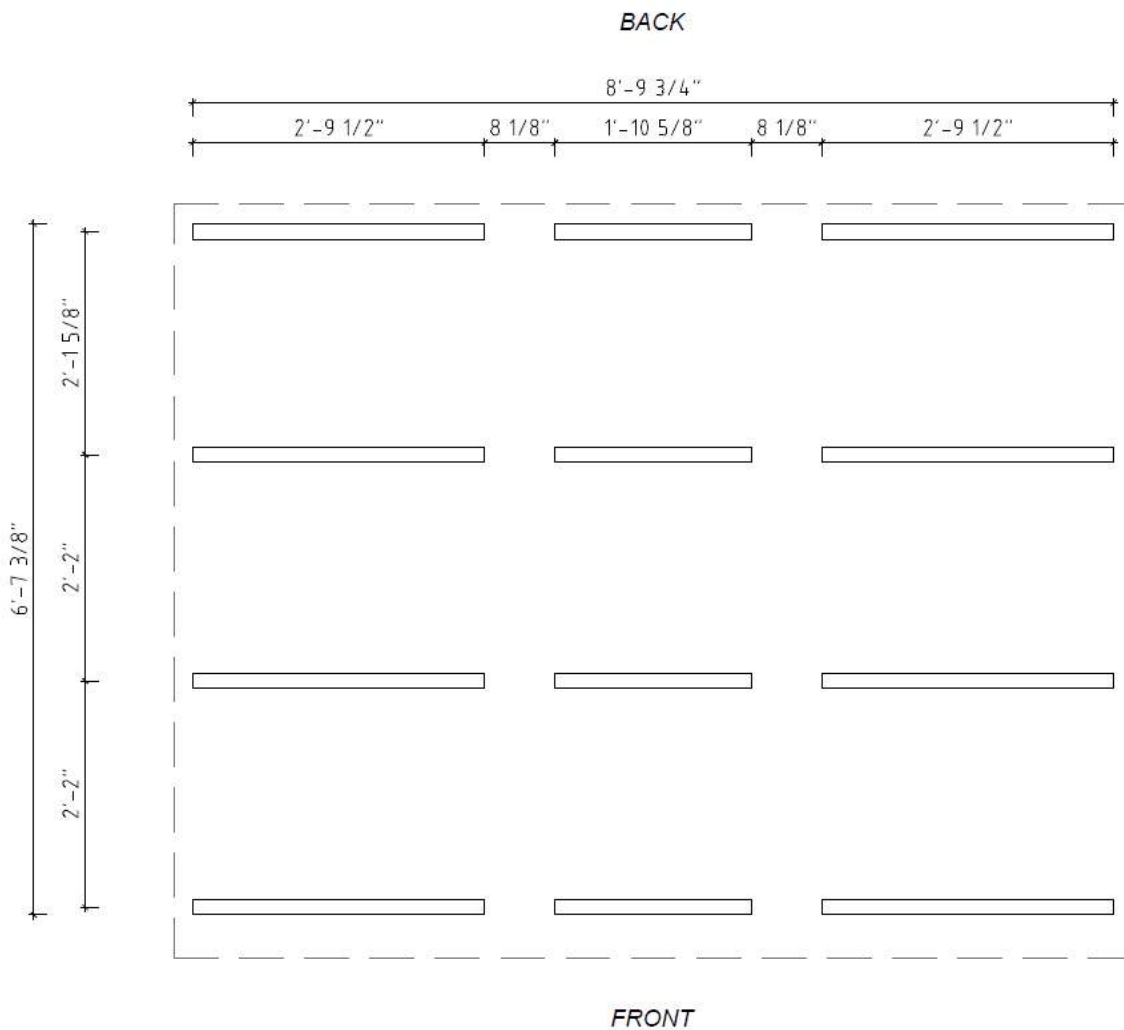
Garden-Series Model G7 & G7S

INSTALLATION GUIDE

Thank you for purchasing a SaunaLife outdoor sauna!

1. INSTALLATION REQUIREMENTS

The base or foundation for Sauna must be **leveled** and **stable**. Sauna must be at least 3 inches higher from the surrounding ground. All base beams must have a support under them.



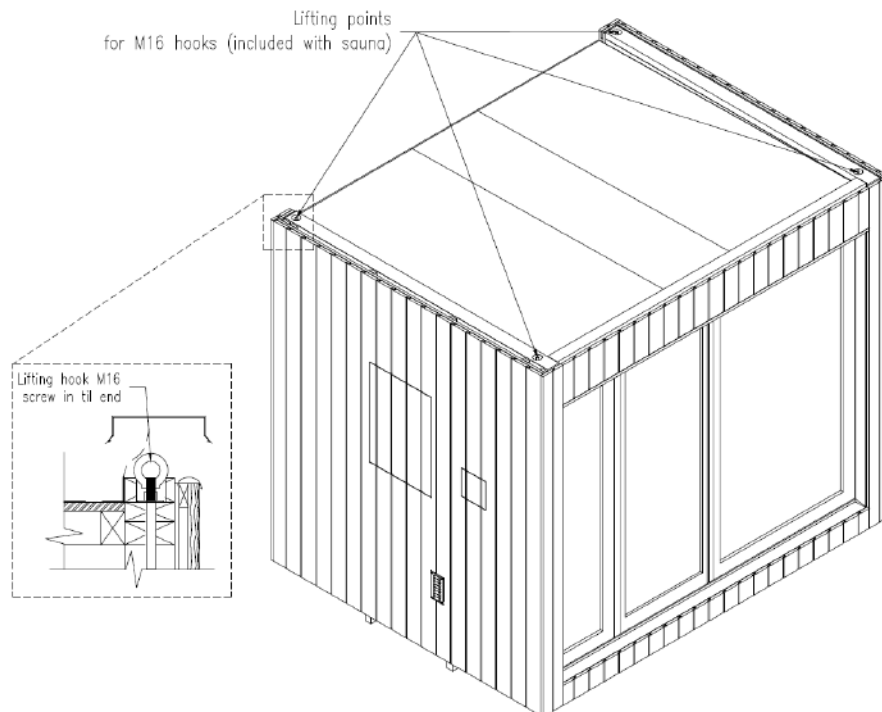
Recommendation:

We recommend placing Sauna on concrete blocks or strips that have a compressed gravel underneath. Using geotextile under the Sauna prevents the growth of grass and weed.

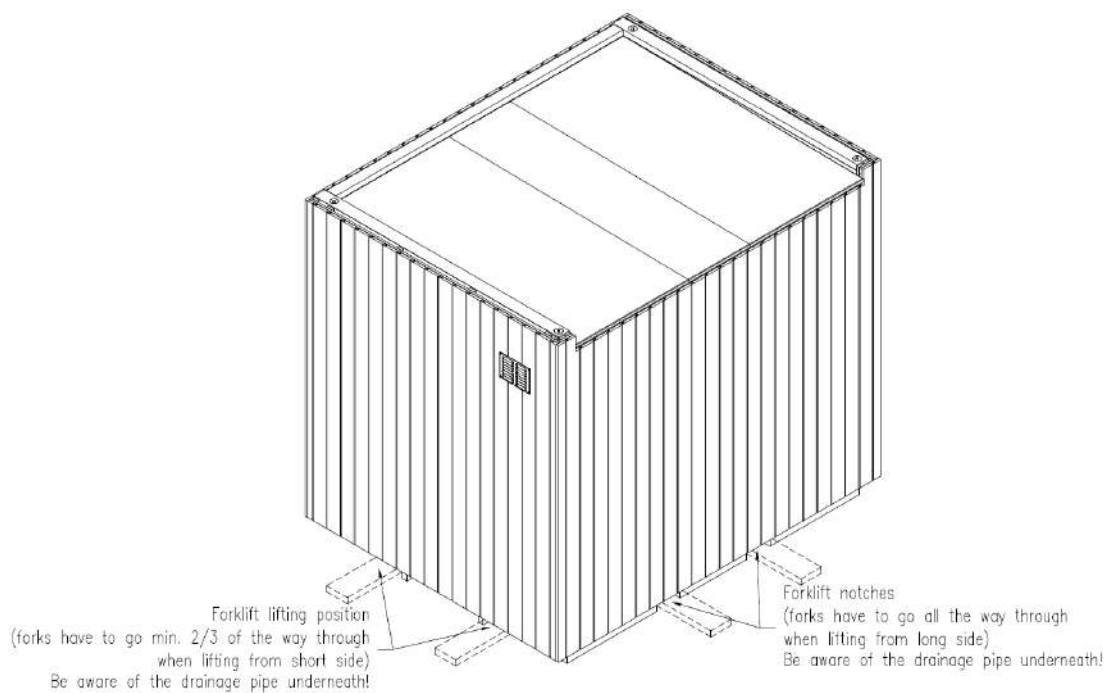
It is also possible to place the Sauna on terrace or pavement, but the Sauna should still be higher than the surface.

2. TRANSPORT

Sauna can be lifted from **above**:



Sauna can be lifted from **below**:



3. FINAL ASSEMBLY

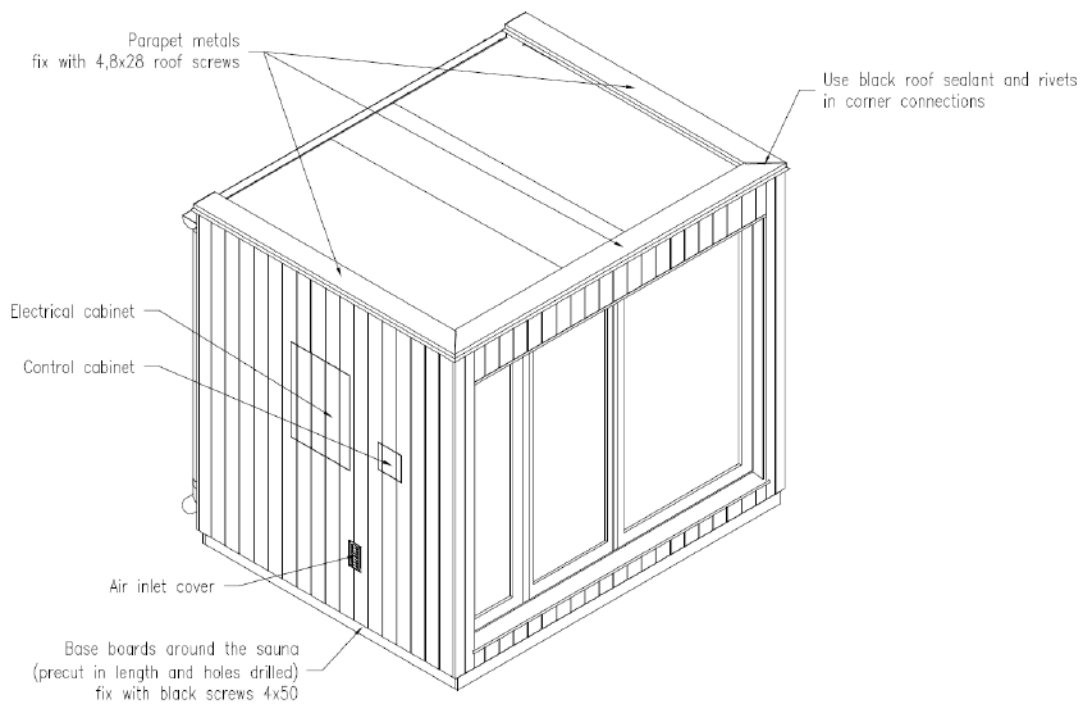
Final assembly shall be organized **by the client**.

Final assembly includes installing of the:

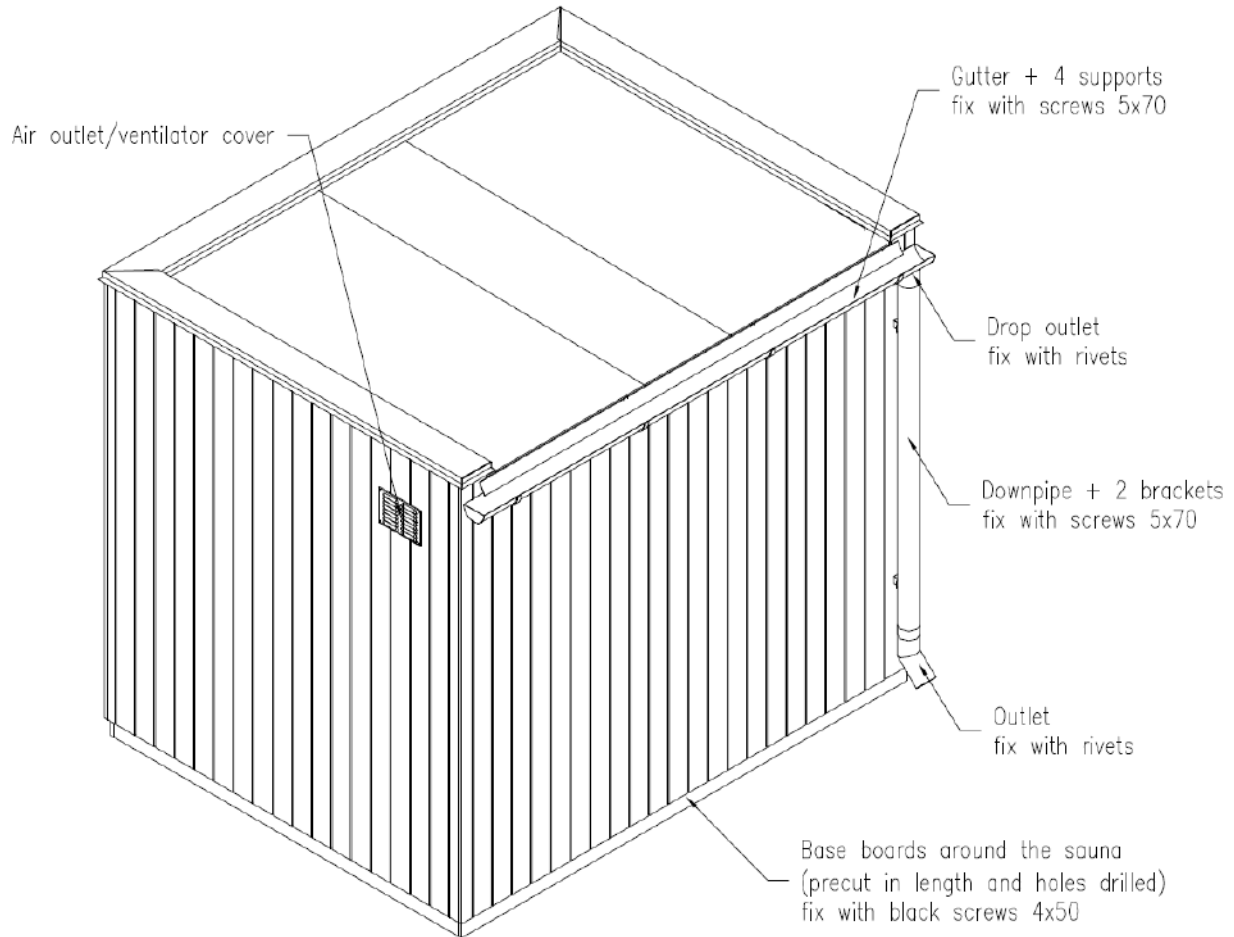
- Parapet metal
- Decorative base boards
- Outdoor lights 120V
- Heater (+ control unit)
- Rainwater system
- Cables
- Electrical cabinet *for Lighting*

3.1 Final Assembly Instructions

3.1.1 Parapet metals must be installed to avoid weather damage of the sauna:



3.1.2 Base boards are for decorative purposes and easy to install. **Rainwater system** must be installed when sauna is exposed to rainwater.



4. MAINTENANCE

Maintenance of the outdoor cladding should be done once a year.

If sauna is used twice a week, then interior cladding, sauna bench and floor grid should be oiled once a year.

5. IMPORTANT SAFETY REQUIREMENTS

Sauna door must be closed during heating to avoid over-heating!



saunalife.com
info@saunalife.com